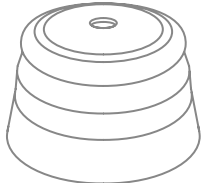


ZigBoat™ Smoke Alarm Sensor

code: ZB204



OWNER MANUAL

Version 1.0

Product description

The smoke alarm sensor will warn occupants when smoke is detected by sounding a loud siren. While away from the boat, the system will also send an instant notification of potential fire through the gateway.

Using the Zigbee communication protocol, the smoke alarm sensor can also activate other smoke alarm sensors and their sirens on board.

Precautions

- Do not remove the product label as it contains important information.
- Do not paint the alarm.
- Avoid placing the Smoke Alarm Sensor in dusty rooms.
- Do not place the sensor in places where it is damp or has naturally occurring gas or smoke.

Adding the sensor to the Gateway

NOTE: Make sure the Gateway is turned on and configured, for more details see the Gateway owner manual.

1. Open the ZigBoat™ App, select the Gateway in the ZB Gateways menu, waiting a few seconds, then select the menu button on the top right (fig. 1) Select "Device list" (fig. 2). Add the sensor by entering the serial number which is on the sensor's label (fig. 3).



Fig. 1



Fig. 2



Fig. 3

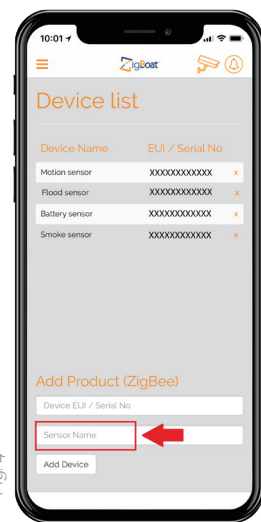
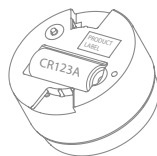


Fig. 4

2. To find the serial number detach the sensor mount base.
3. You can change the devices name by selecting "Name" (fig. 4). Then, press the button "Add Device"
4. Insert the battery (1xCR123) taking note of polarity.



5. The Smoke Alarm Sensor will now start searching (up to 15 minutes) for the ZigBoat™ network to join.
6. While searching for the ZigBoat™ network to join, the LED button flashes red.



7. When the LED button stops flashing, the Smoke Alarm has successfully joined the ZigBoat™ network.

To check the correct configuration, select the overview tab in the ZigBoat™ App. (fig. 5)

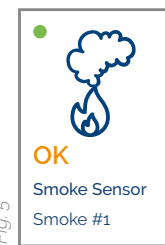


Fig. 5

Green dot: The sensor is working properly

Red dot: The sensor is not able to reach the Gateway.

- Please check the battery status;
- Please check that the serial number has been entered correctly
- In case of a weak or a bad signal, change the location of the ZigBoat™ Smoke Alarm Sensor

"OK": No smoke detected

"ALARM": The sensor detects smoke and will send push notification if the gateway is connected to internet

Placement

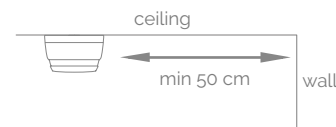
- Place the Smoke Alarm Sensor indoors at a temperature between 0-50°C (32-122°F).
- The distance between the smoke alarm and walls, ventilation or other obstacles, should be at least 50 cm (20").
- The distance between the Alarm Sensor and an oven or cooker should be at least 4 meters.
- The alarm should be placed within reach for battery testing and maintenance.
- The alarm should not be placed at the top of high pointed ceilings or in ceiling corners or within 50 cm (20") of a wall.

RECOMMENDED LOCATIONS

- Cabin
- Galley
- Salon

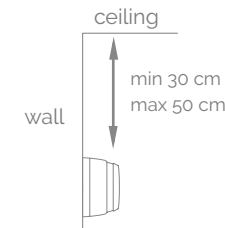
CEILING PLACEMENT

The smoke alarm should be a minimum of 50 cm (20") from the wall.

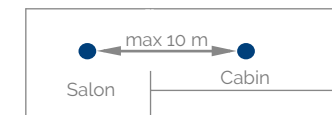


WALL PLACEMENT

The Smoke Alarm Sensor should be between 30 cm (12") and 50 cm (20") from the ceiling.

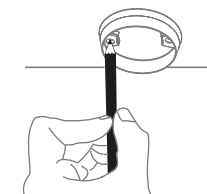


There should be at least one smoke alarm sensor per area with a maximum distance of 10 meters (30') between smoke alarm sensors.

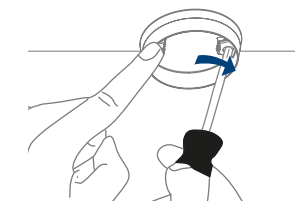


Mounting

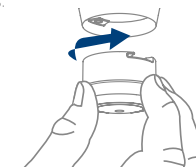
1. Detach the alarm from the mounting base by twisting counter-clockwise.
2. Use the mounting base ring to mark the screw holes on the ceiling or on the wall.



3. Use enclosed screws and plugs to install the mounting base in the marked position.



4. If the battery is missing or inserted incorrectly, it will be impossible to attach the alarm in the mounting base.
5. Attach the alarm by twisting clockwise until it clicks.



Testing

- Always test the working order of the Smoke Alarm Sensor after installation or battery change.
- When pressing the sensor button, the alarm sound should be heard.
- A network alarm test can be performed by holding down the sensor button for at least 6.5 seconds.



Resetting

Resetting is needed if you want to connect your Smoke Alarm Sensor to another gateway or if you need to perform a factory reset to eliminate abnormal behavior.

STEPS FOR RESETTING

1. Detach the sensor from the mounting base by twisting it counterclockwise.
2. Press and hold the LED button until it flashes continuously.
3. Release the button.
4. Resetting process is complete when the red LED starts to blink.



Modes

SEARCHING GATEWAY MODE

Red LED light in the back of the device is flashing every second (up to 15 minutes)

NORMAL MODE

Front LED is flashing every 45 seconds.

ALARM MODE

The simultaneous flashing of the front red LED and sounding of intermittent audible signal. When smoke is detected, the alarm will sound.

Press the "button/top" of the Alarm Sensor to acknowledge and stop the siren. For 10 minutes after the alarm has been silenced, there will be no additional alarms to allow ventilation of the smoke being detected.

LOW BATTERY MODE

Simultaneous audible signals and front LED flashes every 45 seconds, means that the battery should be replaced.

REPLACE DEVICE MODE

If there are no audible signals or the front LED does not flash every 45 seconds, the sensor should be replaced. The life expectancy of smoke alarm sensors is generally 10 years, after which point their sensors begin to lose sensitivity.

Fault finding & cleaning

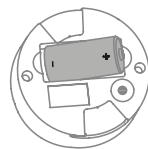
- Dust particles in the smoke chamber can be removed by vacuuming the mesh.
- High humidity condensation can be resolved by drying the smoke alarm sensor.
- If the smoke alarm sensor does not work when the test button is pushed, the probable cause is a faulty battery. Replace the battery if it is worn out.
- In case of a bad or weak signal, change the location of the smoke alarm sensor. Otherwise you can relocate your gateway.
- If the search for the gateway has timed out, a short press on the LED button will restart it.

Battery replacement

CAUTION: RISK OF EXPLOSION IF BATTERIES ARE REPLACED BY AN INCORRECT TYPE. DISPOSE OF THE BATTERIES IN ACCORDANCE WITH INSTRUCTIONS.

CAUTION: When removing cover for battery change - Electrostatic Discharge (ESD) can harm electronic components inside.

1. To replace the battery, detach the smoke alarm from the mounting base by twisting counter-clockwise.
2. Replace the battery noting the polarity. The Smoke Alarm Sensor uses 1xCR123 battery.
3. Attach the alarm in the mounting base by twisting clockwise until it clicks, and test the alarm.



Disposal

Dispose of this product and battery properly at the end of life. This is electronic waste which should be recycled.

Other information

- Note local regulations about information to your insurance company regarding installed smoke alarms.

CE certification

The CE mark affixed to this product confirms its compliance with the European Directives which apply to the product and, in particular, its compliance with the harmonized specifications of standard EN14604:2005/AC:2008 relating to Construction Products Regulation 305/2011.



Other certifications

- ZigBee® certified
- RoHS compliant according to the EU Directive 2002/95/EC
- The ZigBoat™ Smoke Sensor is not intended as a device to prevent and detect fire and smoke.



All rights reserved.

Glomex assumes no responsibility for any errors, which may appear in this manual. Furthermore, Glomex reserves the right to alter the hardware, software, and/or specifications detailed herein at any time without notice, and Glomex does not make any commitment to update the information contained herein. All the trademarks listed herein are owned by their respective owners.

Distributed by Glomex Srl
via Faentina 165/G
48124 Ravenna
Italy

Warranty

Glomex guarantees the Smoke Alarm Sensor (ZB204) against manufacturing defects for a period of 2 years from date of purchase. Warranty can be in the form of repair or replacement of the unit if manufacturing defects have been found and are confirmed by Glomex or one of its affiliates. In order to validate warranty, either the original sales receipt or a copy must be provided at the time warranty is requested. Before returning any items for warranty, please contact the Glomex Customer Service department to receive a RMA which should be completed and sent with the unit to the following address:

GLOMEX S.r.l.

Via Faentina 165/G

48124 Ravenna (Italy)

complete with all the accessories supplied at the time of purchase for shipment. The serial number must neither be erased nor made illegible, otherwise the warranty will be voided.



Consulta il manuale utente in italiano su:

Consultez le manuel d'utilisation en français sur:

Siehe das deutsche Benutzerhandbuch auf:

Consulte el manual de usuario en español en:

